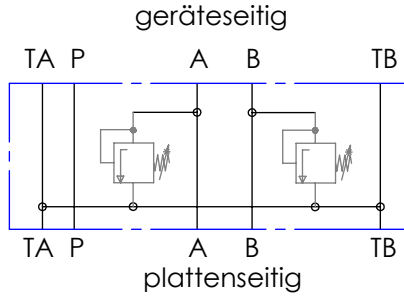
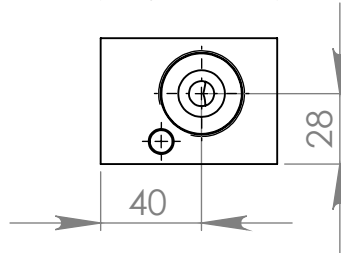
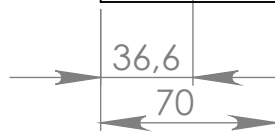
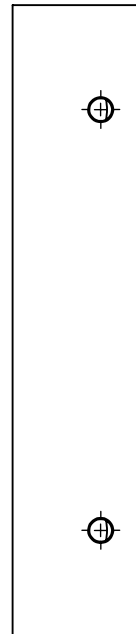
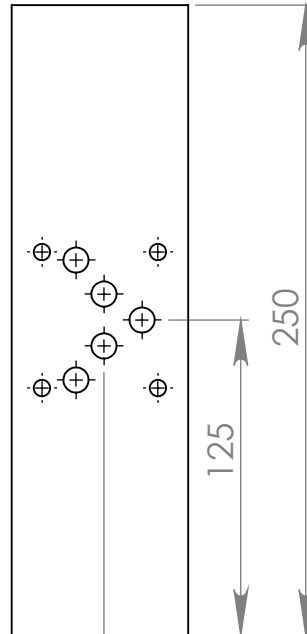
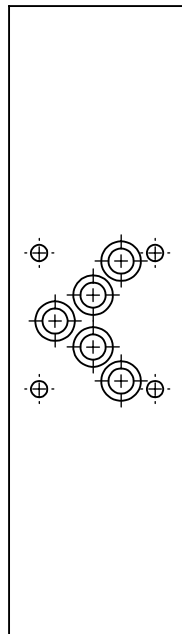
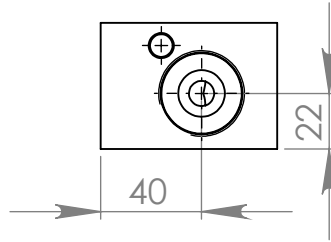


**Zwischenplatte NG10  
für Druckbegrenzungsventile  
direktgesteuert Einbaubohrung  
für DBDS10 Rexroth (32H7 - M35x1,5)  
A-T und B-T**

**Symbol**



**Bestell Nr.: 810051003**



				NAME	DATE	<b>H &amp; S</b>	
		MAX. 315 bar		DRAWN	R. Grotz		12.09.10
				CHECKED			
				ENG APPR.			
				MFG APPR.			
				Q.A.			
		MATERIAL		COMMENTS:		Zwischenplatte NG10 für Druckbegrenzungsventile direktgesteuert Einbaubohrung für DBDS10 Rexroth (32H7 - M35x1,5)	
		AlCuMg1 F38		70x50x250			
NEXT ASSY	USED ON	FINISH					
APPLICATION		DO NOT SCALE DRAWING					
				SIZE	DWG. NO.	REV.	
				<b>A</b>	810051003	<b>A</b>	
				SCALE:1:3	WEIGHT:	SHEET 1 OF 1	

**H & S**

Hydraulik & Steuerblöcke

Hartmannstr. 55  
72458 Albstadt  
Tel.: 07431/701794  
Fax.: 07431/701793