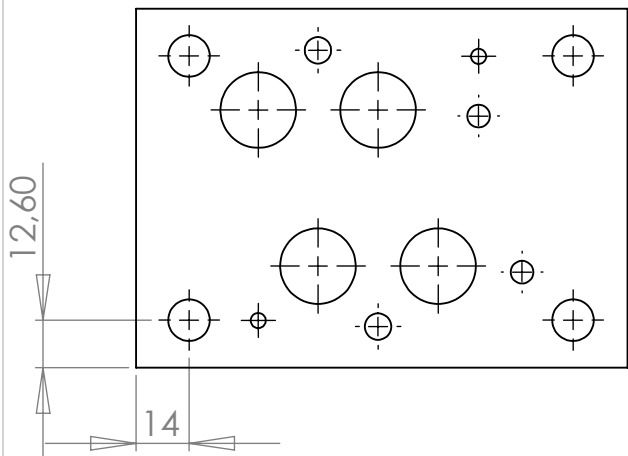
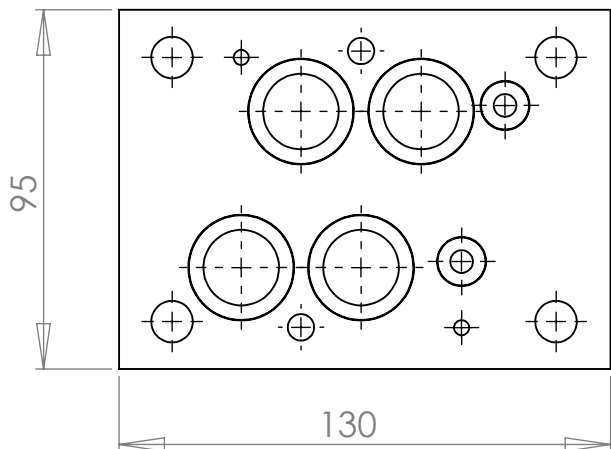
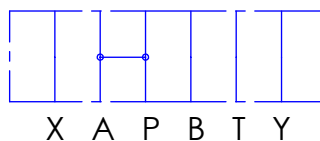


# Umlenkzwischenplatte NG16 Lochbild DIN 24340 ISO 4401

Bestell Nr.:

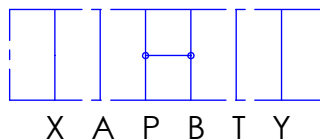


Symbol



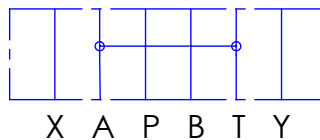
NG16 P-A

**8160280**



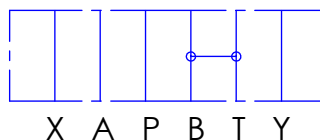
NG16 P-B

**8160281**



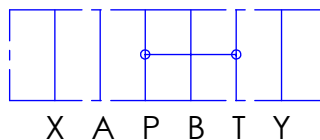
NG16 T-A

**8160282**



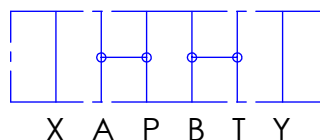
NG16 T-B

**8160283**

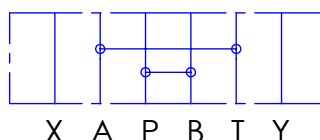


NG16 P-T

**8160284**



NG16 P-A/T-B **8160285**



NG16 P-B/T-A **8160286**

**incl. O-Ringe  
4 Stk. 23x2,5  
2 Stk. 9,2x1,78  
Stopfen**

Sonderausführungen auf Anfrage  
Stärke (40 mm) ist je nach Ausführung verschieden

Änderungen vorbehalten

**H & S**  
Hydraulik & Steuerblöcke  
Hartmannstr. 55  
72458 Albstadt  
Tel.: 07431/701794  
Fax.: 07431/701793

|             |         |                      |  |
|-------------|---------|----------------------|--|
|             |         | MAX. 315 bar         |  |
|             |         | MATERIAL AICuMg1 F38 |  |
| NEXT ASSY   | USED ON | FINISH               |  |
| APPLICATION |         | DO NOT SCALE DRAWING |  |

|                |          |
|----------------|----------|
| NAME           | DATE     |
| DRAWN R. Grotz | 05.12.07 |
| CHECKED        |          |
| ENG APPR.      |          |
| MFG APPR.      |          |
| Q.A.           |          |
| COMMENTS:      |          |
| 130x95x40      |          |

|                              |          |              |  |
|------------------------------|----------|--------------|--|
| <b>H &amp; S</b>             |          |              |  |
| Umlenkzwischenplatte<br>NG16 |          |              |  |
| SIZE                         | DWG. NO. | REV.         |  |
| <b>A</b>                     | 8160280  | <b>A</b>     |  |
| SCALE:1:5                    | WEIGHT:  | SHEET 1 OF 1 |  |